

## Powered Air Purification Respirator (PAPR)

Model WLPAPR20W

**NIOSH PROTECTION LISTING:** HE - High-Efficiency Particulate Air Filter for Powered Air-Purifying Respirators

### NIOSH CAUTIONS and LIMITATIONS

- A Not for use in atmospheres containing less than 19.5 percent oxygen.
  - B Not for use in atmospheres immediately dangerous to life or health.
  - C Do not exceed maximum use concentrations established by regulatory standards.
  - F Do not use Powered Air-Purifying Respirators if airflow is less than four cfm (115 lpm) for tight-fitting face-pieces or six cfm (170 lpm) for hoods and/or helmets.
  - I\* Contains electrical parts that may cause an ignition in flammable or explosive atmospheres.
  - J Failure to properly use and maintain this product could result in injury or death.
  - L Follow the manufacturer's User Instructions for changing cartridges, canister and/or filters.
  - M All approved respirators shall be selected, fitted, used, and maintained in accordance with MSHA, OSHA, and other applicable regulations.
  - N Never substitute, modify, add, or omit parts. Use only exact replacement parts in the configuration as specified by the manufacturer.
  - O Refer to User Instructions, and/or maintenance manuals for information on use and maintenance of these respirators.
  - P NIOSH does not evaluate respirators for use as surgical masks.
  - S Special or critical User Instructions and/or specific use limitations apply. Refer to User Instructions before donning.
  - PH The limited PAPR approval will be effective until the declaration that circumstances exist justifying the authorization of the emergency use of personal respiratory protective devices during the COVID-19 outbreak is terminated under Section 564(b)(2) of the Act, or the EUA is revoked under Section 564(g) of the Act, or until such time that the approved configuration can no longer be maintained whichever may be shorter.
- \* Contains electrical components and the intrinsic safety has not been evaluated and approved by Mining Safety Health Administration (MSHA) or a recognized independent laboratory.

### COMPONENT LIST

#### Included in the Packaging:

1. Face Shield Assembly (1ct)
2. Air Distribution Assembly (1ct)
3. Air Hose (1ct)
4. Power Cable (1ct)
5. \*Battery and Charger (WLBATTPAK) (1ct)
6. \*Filter (WLFILTERPAK) (1ct)
7. \*Shoulder Harness (WLHARNESS) (1ct)
8. \*Straw (10ct) (WLSTRAW)
9. \*Drawstring and Clip (10ct) (WLTIEPAK)

\* Consumable item, order as needed

#### Ordered Separately:

Hood (min order 9000 ct) (WLHOODPAK)

(Note: Visit [www.WINHealthLabs.com](http://www.WINHealthLabs.com) for ordering purpose) CONSUMABLES WILL NOT BE AVAILABLE UPON THE WITHDRAWAL OF THE FDA'S EMERGENCY USE AUTHORIZATION.

Not Supplied: Tape (Visit [www.WINHealthLabs.com](http://www.WINHealthLabs.com) for options)



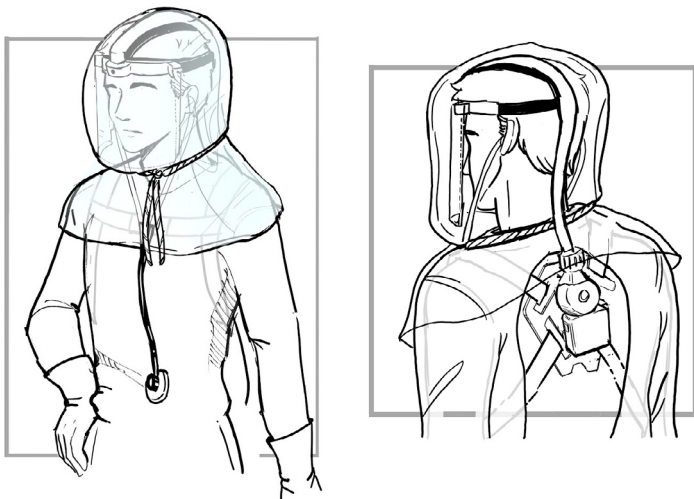
## INSTRUCTIONS FOR USE

Check all equipment for damage prior to each use. Do not use damaged equipment.

Ensure that all consumables are available prior to each use. Do not use equipment unless all consumables are available. Use manufacturer's supplied components only. For detailed information on instructions, please visit [www.WINHealthLabs.com](http://www.WINHealthLabs.com)

### Equipment Assembly

- Remove Protective films (both sides) from the Face Shield Assembly.
- Clean the Air Distribution Assembly as per the standard cleaning procedures prior to use.
- Fully charge battery by plugging the wall adapter into a 120V receptacle and plugging the charger cord into the 12V In/Out port of the battery. Turn the battery pack ON (-) to charge. Battery is fully charged when all four indicator lights are lit.
- Remove the filter from the package. Open filter housing by releasing the two snaps on the housing and opening the cover. Remove shipping label/ sleeve on filter housing and insert filter into housing with flange side out.
- NOTE: The recommended change interval for the HEPA filter is not to exceed 3 months, or if the filter shows signs of blockage or physical damage.
- Adjust straps according to individual fit preferences.
- Lock the Air Distribution Assembly on the shoulder harness plate.



## INSTALLATION INSTRUCTIONS

1. Only use original manufacture parts and consumables.
2. Verify full charge on the battery.
3. Install Battery in the battery compartment in the Air Distribution Assembly. Connect Power Cable to the battery.
4. Turn on the battery switch ("") and verify airflow as per the procedure listed in the guidelines on page 4 (Fan/Blower). KEEP THE BATTERY IN ON ("") POSITION WHEN USING PAPR.
5. Put on shoulder harness with the Air Distribution Assembly.
6. Put Face Shield Assembly on head and adjust to the head size of the user.
7. Put on Hood with corners above shoulders.
8. Place Drawstring over hood.
9. Cinch Hood, allowing room for two fingers.
10. Tape down corners of the Hood to rear while Hood is filled with air.

## REMOVAL INSTRUCTIONS

1. Remove and disinfect Drawstring and Drawstring Clip.
2. Untuck Hood from neck area.
3. Remove Hood from corners away from body and discard.
4. Remove Shoulder Harness with the Air Distribution Assembly.
5. Remove Face Shield Assembly.
6. Disinfect all parts as per procedures listed in the guidelines below.
7. Remove Battery from the Air Distribution assembly and prepare for recharging.

Concerned or anxious patients sometimes reach out and grab at medical clinicians. The patients may catch hold of the clinicians physically about their bodies or catch onto their PPE garments. There is a potential for the PAPR drawstring to be among the PPE items that they grab onto.

In a situation where there is concern that you are dealing with a patient may do this, we recommend the following:

1. Tuck the drawstring under the hood and then inside your gown. OR
2. After cinching up the drawstring, tape it down over the shoulder at the same time as taping back the hood. OR
3. After cinching up the drawstring about the neck, cut the drawstring off with scissors, 2 inches beyond the drawstring clip.

Note for option 3 you will need to replace the drawstring (WLTIEPAK) for the next usage.

---

## **GUIDELINES FOR CLEANING AND DISINFECTING THE PAPR ASSEMBLY**

Please always refer to the latest information from trusted sources such as the US Centers for Disease Control and Prevention (US CDC) and the World Health Organization regarding selection, use, maintenance and cleaning of personal protective equipment.

Your employer should thoroughly review this information prior to selecting the disinfecting product for your equipment and specific application. This PAPR has not evaluated the effectiveness of any agents with regards to inactivating viruses on the PAPR or its components.

Components of the PAPR may be damaged over time with prolonged use of disinfecting products. If you discover any signs of damage, remove the PAPR from service. Do not use the PAPR after the Expiration Date or withdrawal of the FDA's Emergency Use Authorization for this PAPR.

### **Cleaning and/or disinfecting the Powered Air Purifying Respirator (PAPR) Assembly:**

Use the following guidelines for cleaning your PAPR assembly. Additional inspection, cleaning, and storage procedures for Whirlpool Corporation's PAPR components may be found below.

#### General

1. Confirm the disinfecting agent is effective and follow its instructions.
2. Carefully inspect all PAPR components to identify any damage, or excessive wear.  
STOP USING ANY DAMAGED OR WORN PAPR.
3. Store away from contaminated areas when not in use, and in accordance with the User Instructions.

#### Headgear Assembly, Breathing Tube/Hose, and Shoulder Harnesses

1. Prior to cleaning, discard hood and disassemble PAPR per User Instructions.
2. Clean all parts with a clean soft cloth lightly dampened with warm water containing a mild pH neutral (pH 6-8) detergent.
3. Wipe external surfaces with a clean soft cloth lightly dampened in one of EPA-registered disinfectant cleaners, following its user instructions.
4. Clean thoroughly with clean, warm, lightly damp cloth after each use.
5. Hand dry with a clean lint-free cloth or air-dry at room temperature. Allow to completely air dry prior to reuse or storage.

#### Fan/blower unit and battery pack

1. Do not allow liquid to enter the air outlet port or the motor housing area.
2. Do not use compressed air or a vacuum to clean the interior of the fan/blower.
3. Use caution cleaning near the battery pack connector pins near the bottom of the motor/blower unit. Ensure this area and pins are thoroughly dry before next use or storage.
4. Clean outer surfaces of the PAPR assembly and battery pack with a clean soft cloth lightly dampened with warm water containing a mild pH neutral (pH 6-8) detergent.
5. Wipe outer surfaces of the fan/blower assembly and battery pack with a clean soft cloth lightly dampened with one of the noted EPA-registered disinfectant cleaners but do not allow water into the fan/blower assembly or battery pack.
6. Wipe all outer surfaces with a clean soft cloth dampened with clean warm water.
7. If the battery cannot be properly cleaned, stop using the PAPR.

#### Filter

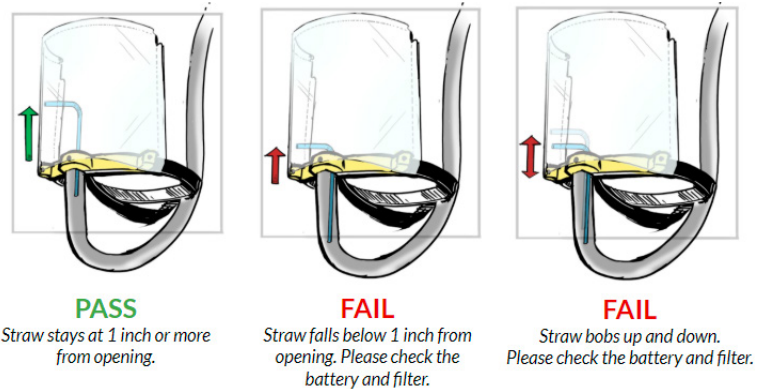
1. NEVER ATTEMPT TO CLEAN THE FILTER. Replace and properly dispose of the filter when dirty or damaged.

## INSPECTING AND STORING THE PAPR ASSEMBLY AND COMPONENTS

Inspect PAPR before each use to ensure good operating condition. IF DAMAGED IN ANY WAY, STOP USING THE PAPR.

### Fan/Blower:

- Ensure Filter Cover and Motor/Blower has no cracks or damage. Both should be in place and dirt/contaminant free.
- Ensure that the filter release snaps are fully engaged and holds the cover securely on the motor/blower.
- Ensure that the outlet of the fan/blower (i.e. where the hose attaches) is clean and allows for proper hose attachment.
- Procedure for checking airflow prior to each use:
  - Bend the supplied straw (WLSTRAW) 90 degrees at the corrugated section.
  - Turn on the unit and hold the face shield upside down, so the air outlet is pointing up.
  - Place the straw with the long end into the tube as far as it can go.
  - If the straw is lifted upward by the airflow so the gap between the short leg and the end of the tube is more than 1", the airflow is good, see illustration.



### Battery Pack:

- Ensure the battery pack has no cracks, holes or other damage. See Battery Instructions for additional warnings.
- Battery pack electrical contacts should be clean and dry with no corrosion.
- Attach the battery pack (12v Outlet) to the fan/blower and gently tug on the battery pack to ensure it is properly attached and held firmly in place.

### Filter:

- Ensure that the Filter and its gasket is intact and has no cracks, tears or other damage. If the filter is wet or appears heavily loaded with particulate, it MUST BE REPLACED. Never attempt to clean the filter by any means as the filter media can be easily damaged or compromised.

Always store PAPR in a clean, contaminant free environment, protected from prolonged exposure to heat, sunlight, radiation and chemicals. Replacement parts should be stored in original packaging until use.

## END OF LIFE DISPOSAL

Dispose of PAPR system and components appropriately.

## DISCLAIMER

Before using any of the products or information detailed herein, you must evaluate it and determine if it is suitable for your intended use. You assume all risks and liability associated with such use. WIN Health Labs, LLC makes no warranties relating to the efficacy of any of the products detailed herein in preventing the spread and/or contraction of the coronavirus. WIN Health Labs, LLC will not be liable for any loss or damage arising from any information contained herein, whether direct, indirect, special, incidental or consequential, regardless of the legal theory asserted, including warranty, contract, negligence or strict liability. Technical information provided by WIN Health Labs, LLC is based on experience and/or test data believed to be reliable but the results may not be relevant to every user's application.

©2020 WIN Health Labs LLC. All rights reserved. D200627HH-E